



# PARTS MANUAL

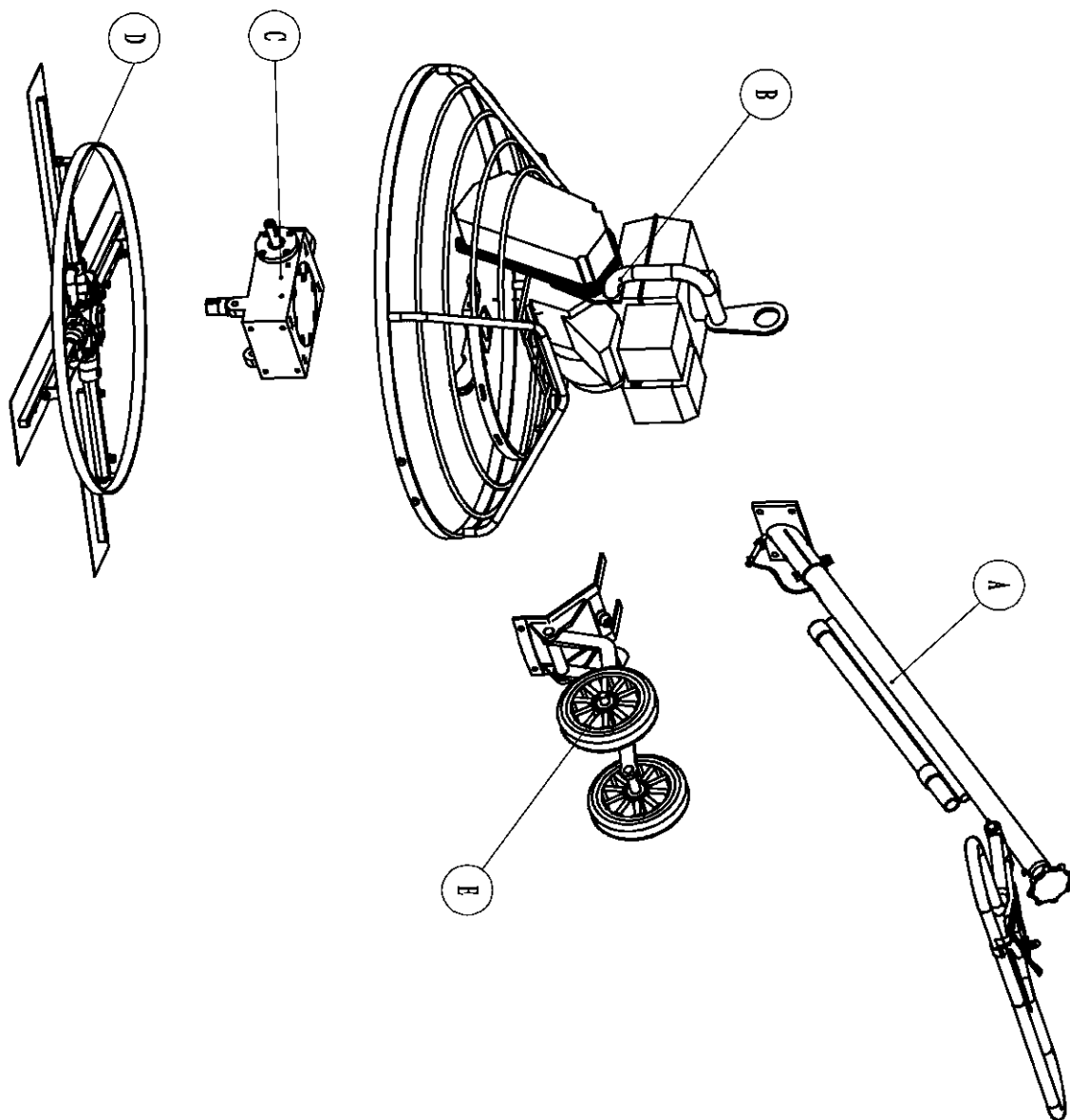
## POWER TROWEL

PMT36 PMT42 PMT46 SERIES



# ESPLOSO PIÙ ELENCO RICAMBI LISCIATRICE PMT36-46

PMT36. 42. 46-BOM00-A



PMT36. 42. 46-BOM00-A

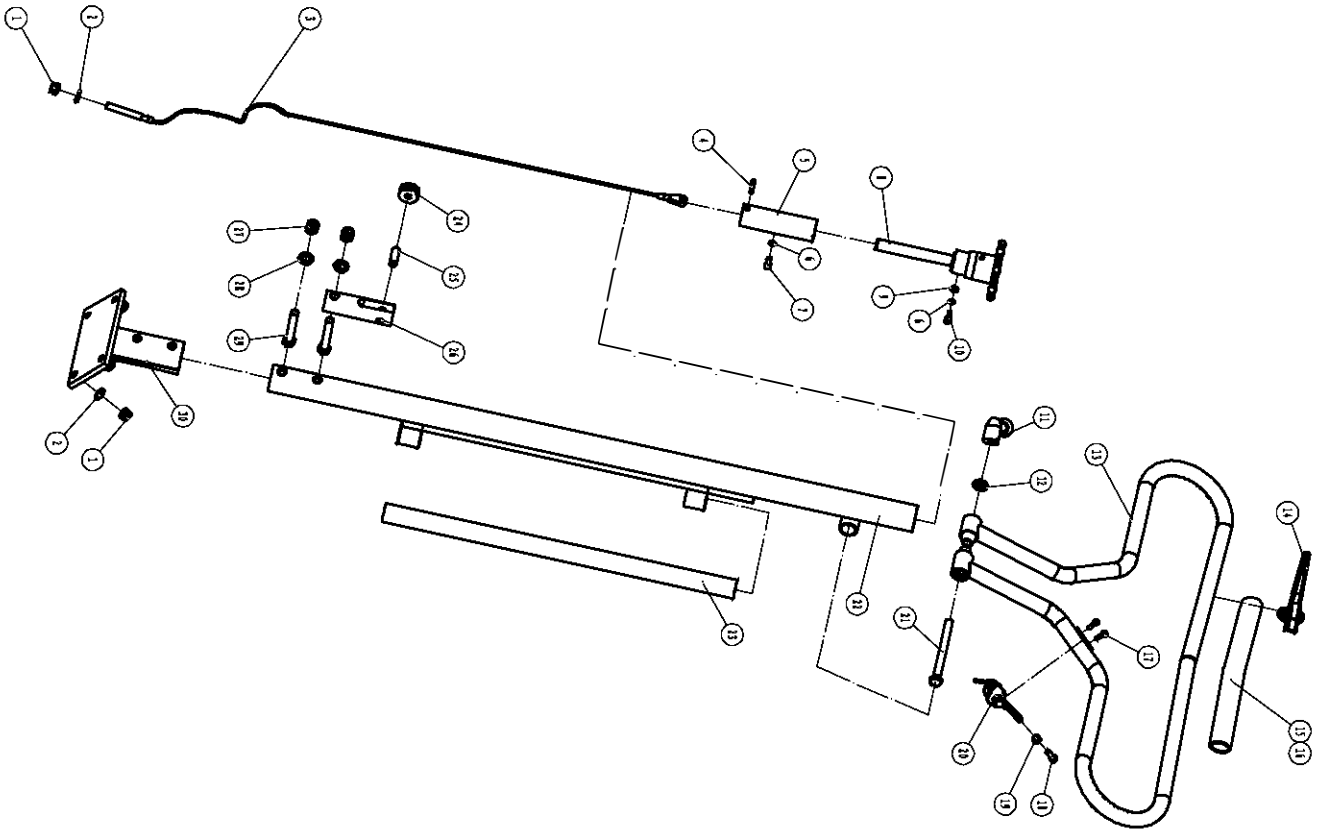
B

A

**PARTS LIST GENERAL**  
**PMT36/MT42/MT46**

PMT36、42、46-BOM00-A

ITEM NO.	PART NO.	DESCRIPTION	QUANTITY
A	PPMT36	HANDLE ASSY. FOR PPMT36	1
	PMT42.46	HANDLE ASSY. FOR PPMT42/PMT46	1
B	PMT36	MAIN BODY ASSY., PMT36	1
	PMT42	MAIN BODY ASSY., PMT42	1
	PMT46	MAIN BODY ASSY., PMT46	1
C	PMT36.42.46	REDUCING MECHANISM	1
D	PMT36	SPIDER PLATE ASSY., PMT36	1
	PMT42	SPIDER PLATE ASSY., PMT42	1
	PMT46	SPIDER PLATE ASSY., PMT46	1
E	PMT36	TROLLEY WHEEL	1



B

A

# PARTS LIST 1

## PMT36/MT42/MT46

PMT36、42、46-BOM01-B

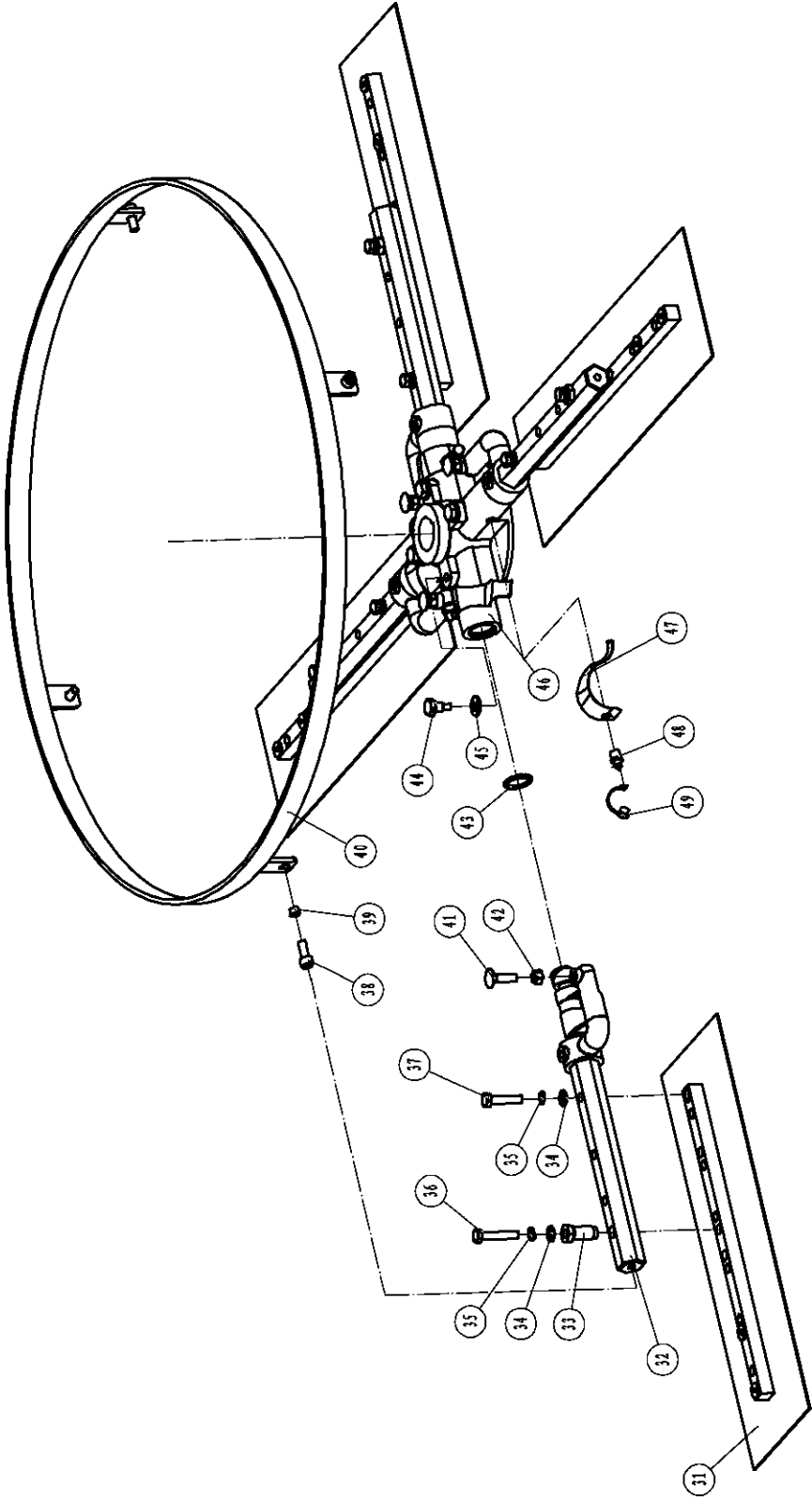
ITEM NO.	PART NO.	DESCRIPTION	QUANTY	REMARK	ERP No.
1	GB889.1-M10	LOCK SCREW Φ10	5		20405006
2	GB97.1-10	WASHER Φ10	5		20501009
3	MT36-05-03-02	WIRE.MT36	1		40101069
	MT42.46-05-03-02	WIRE.MT42.46	1		21399004
	PMTL36-05-03-02	WIRE.PMTL36	1		21399007
4	GB879-5×30	PIN	1		20802104
5	MT24-02-01	SCREW	1		40706008
6	GB93-6	SPRING WASHER	2		20509004
7	M6×8	NUT	1		20306049
8	MT24-02-00-03	TROWEL CONTROL ASSY.	1		54601011
9	GB97.1-6	SPACER	1		20501005
10	GB5783-M6×12	BOLT	1		20102051
11	MT24-03-03-10	HANDLE BALL ROD	1	OPPTIONAL PARTS	40101061
	MT24-03-03-10C	HANDLE BALL ROD	1		54601166
12	GB97.1-12	WASHER 12	1		20501024
13	PMT36.42.46-05-06-04P	PMT ROUND HANDLE ASSY.	1		40305157
	PMT36.42.46-05-06-04	PMT ROUND HANDLE ASSY.	1	OPPTIONAL PARTS	40305138
	PMT36.42.46-05-06-04-SJP	PMTL TRIANGLE HANDLE ASSY.	1		40305161
	PMT36.42.46-05-06-04-SJ	PMTL TRIANGLE HANDLE ASSY.	1	OPPTIONAL PARTS	40305136
14	MT36-05-06-05W	SAFETY STOP SWITCH ASSY.	1		54601013
	170汽油微耕机熄火开关	ON-OFF SWITCH	1	OPTIONAL PARTS(with a fas	41403100
15	MH4012.00.32-1C	ARMREST VESTEE-PARKER	1		41201047
16	MH4012.00.31	ARMREST HOSE	1		41201046
17	GB70.3-M6x10	SCREW M6X10	2		20308061
18	GB5783-M6x30	BOLT	1		20102056
19	GB6170-M6	I TYPE NUT M8	1		20401003
20	PMT36.42.46-05-07-01	TROLLEY CONTROL ASSY.	1		41404018
	PMTL36.42.46-05-07-01	TROLLEY CONTROL ASSY.	1		41404019
21	GB5782-M12×130	BOLT M12X130	1		20101115
22	PMT36-05-01-00P	HANDLE LEVER (PMT36)	1		40305158
	PMT36-05-01-00	HANDLE LEVER (PMT36)	1	OPPTIONAL PARTS	40305128
	PMT42.46-05-01-00P	HANDLE LEVER (PMT42.46)	1		40305162
	PMT42.46-05-01-00	HANDLE LEVER (PMT42.46)	1	OPPTIONAL PARTS	40305129
	PMTL36-05-01-00P	HANDLE LEVER (PMTL36.42.46)	1		40305159

**PARTS LIST 1**  
**PMT36/MT42/MT46**

PMT36、42、46-BOM01-B

ITEM NO.	PART NO.	DESCRIPTION	QUANTY	REMARK	ERP No.
	PMTL36-05-01-00	HANDLE LEVER (PMTL36. 42. 46)	1	OPPTIONAL PARTS	40305144
23	MT36-05-01-06	LIFT ROD (PMT36)	1		40408006
	PMT36-05-01-06	LIFT ROD (PMT36)	1	OPPTIONAL PARTS	40305135
	MT42. 46-05-01-06	LIFT ROD (PMT42. 46)	1		40408010
	PMT42. 46-05-01-06	LIFT ROD (PMT42. 46)	1	OPPTIONAL PARTS	40305130
	PMTL36-05-01-06P	LIFT ROD (PMTL36. 42. 46)	1		40305160
	PMTL36-05-01-06	LIFT ROD (PMTL36. 42. 46)	1	OPPTIONAL PARTS	40305137
24	MT36-05-03-04	PULLEY	1		41405019
25	GB119-10×30	PIN	1		20801010
26	PMT36. 42. 46-05-03-03	PULLEY TRACKET	1		40203289
27	GB889. 1-M12	LOCK SCREW M12	2		20405007
28	GB97. 1-12	WASHER 12	2		20501010
29	GB5782-M12×70	BOLT M12x70	2		20101099
30	PMT36-05-04-01	JUNCTION PLATE (PMT36. 42. 46)	1		40703008
	PMTL36-05-04-01	JUNCTION PLATE (PMTL36. 42. 46)	1		40703009

PMT36, 42, 46-BOM02-A

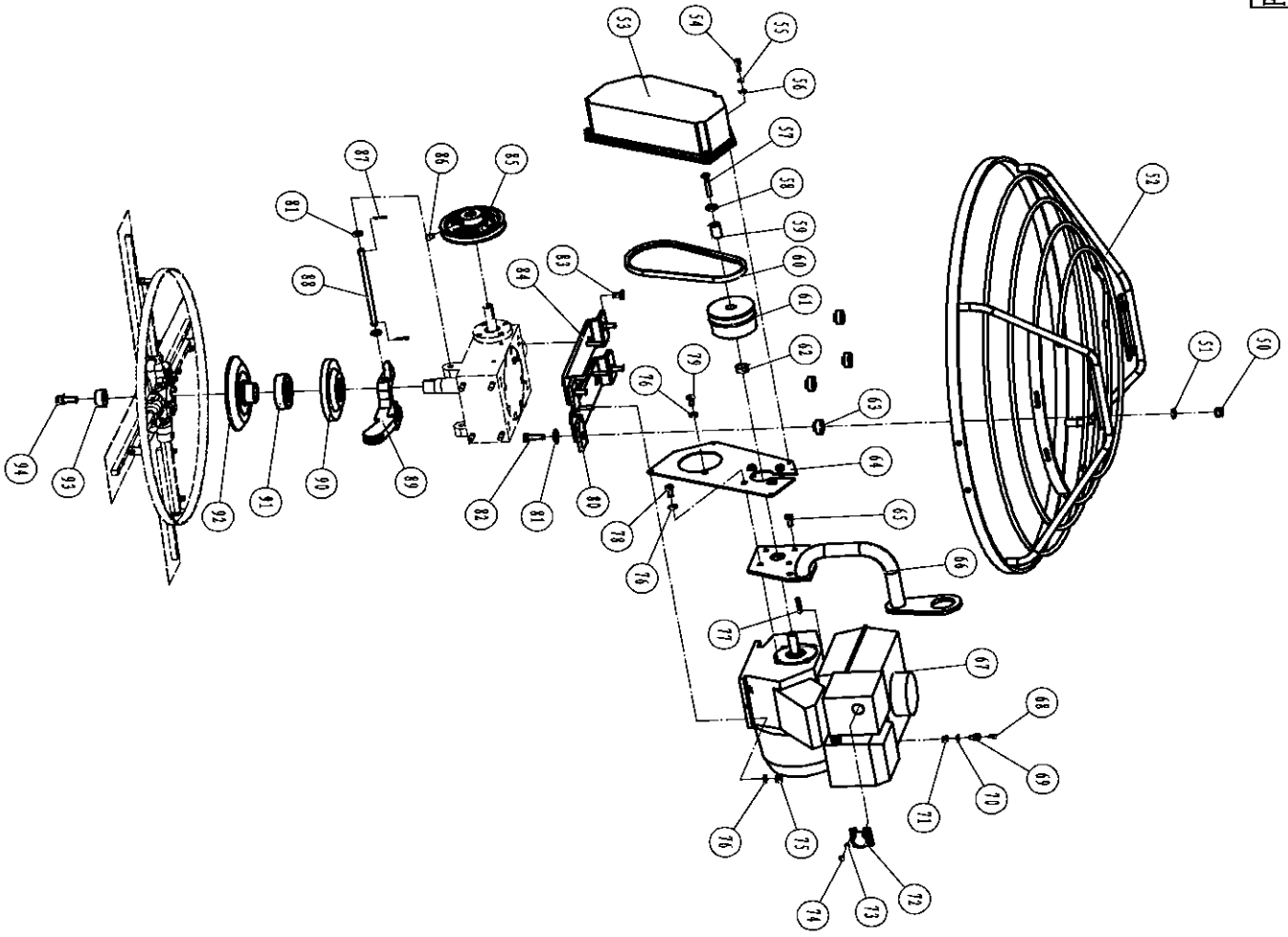


PMT36, 42, 46-BOM02-A

**PARTS LIST 2**  
**PMT36/MT42/MT46**

PMT36、42、46-BOM02-A					
ITEM NO.	PART NO.	DESCRIPTION	QTY	REMARK	ERP No.
31	MT36-04-00-11	BLADE, PMT36	4		40302070
	MT42-04-00-11	BLADE, PMT42	4		40302080
	MT46-04-00-11	BLADE, PMT46	4		40302079
32	MT36-06-PWT	TROWEL ARM EXTENDED, PMT36	4		40101084
	MT42.46-06-PWT	TROWEL ARM EXTENDED, PMT42 & PMT46	4		40101090
33	PMT36-04-00-08	BOLT FOR ADJUSTING BLADE M14*1.0	4		40401053
34	GB97.1-8	SPACER	8		20501007
35	GB93-8	SPRING WASHER	8		20509006
36	5/16-18UNF×50	SCREW	4		20109021
37	5/16-18UNF×38	SCREW	4		20109022
38	GB70.1-M8×20	SCREW M8X20 (PMT42、46)	4		20306122
39	MT42.46-04-00-14	ALU. SLEEVE (PMT42、46)	4		40504151
40	MT42.46-04-00-12	OUTER RING (PMT42、46)	1		40507046
	PMT42.46-04-00-12	OUTER RING (PMT42、46)	1		54601138
41	GB14-M8x30	BOLT M8X30	4		20110021
42	GB6170-M8	I TYPE NUT M8	4		20401004
43	GB3452.1-24x3	O RING	4		21101020
44	PMT36-04-00-06	BOLT	4		40401054
45	GB97.1-10	WASHER 10	4		20501009
46	MT36-04-00-04	SPIDER PLATE ONLY	1		40302069
47	MT36-04-00-10	SPRING STRIP	4		40201081
48	GB11152-M10x1	CUP	4		20426027
49	Φ6	CUP COVER	4		41201127





A

B

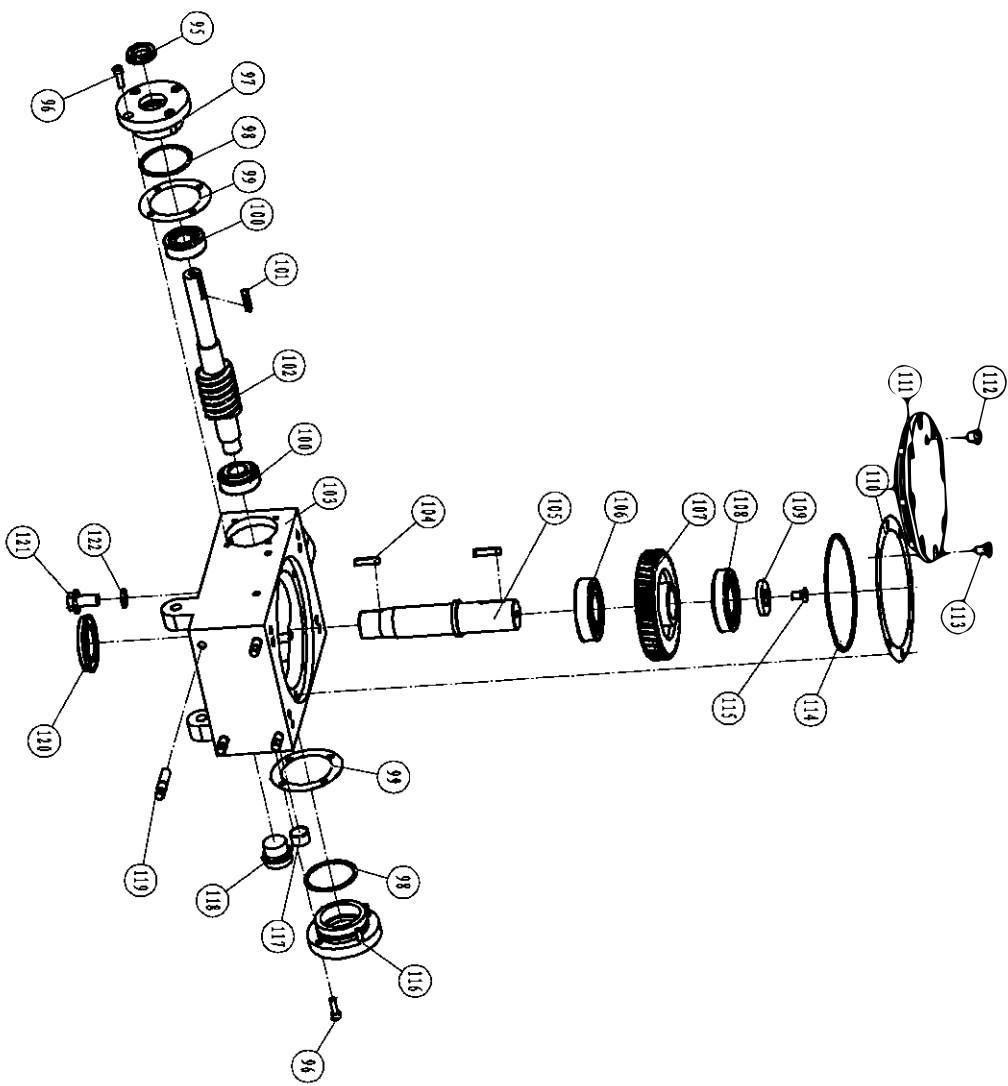
PMT36、42、46-BOM03-A
设计

**PARTS LIST 3**  
**PMT36/MT42/MT46**

PMT36、42、46-BOM03-A					
ITEM NO.	PART NO.	DESCRIPTION	QTY	REMARK	ERP No.
50	GB889.1-M10	LOCK SCREW M10	4		20405006
51	GB97.1-10	WASHER 10	4		20501009
52	MT36-01-00-00	PROTECTIVE RING ASSY. (PMT36)	1		40302067
	PMT36-01-00-00	PROTECTIVE RING ASSY. (PMT36)	1		54601136
	MT36-01-00-BY	PROTECTIVE FRAME PMT36	1		40302068
	MT42-01-00-00	PROTECTIVE RING ASSY. (PMT42)	1		54601017
	PMT46-01-00-00	PROTECTIVE RING ASSY. (PMT46)	1		54601137
	MT46-01-00-00	PROTECTIVE RING ASSY. (PMT46)	1		54601015
53	MT36-06-00-03	BELT GUARD	1	DIAMETER AXLEΦ19.05、Φ20	40301075
	MT42.46-06-00-03	BELT GUARD	1	DIAMETER AXLEΦ25、Φ24	40206118
54	GB70.1-M6×20	SCREW M6X20	4	DIAMETER AXLEΦ19.05、Φ20	20306069
	GB70.1-M6×25	SCREW M6X25	4	DIAMETER AXLEΦ25、Φ24	20306077
55	GB93-6	SPRING WASHER 6	4		20509022
56	GB97.1-6	WASHER 6	4		20501023
57	GB5783-M8×50	BOLT (S)	1	DIAMETER AXLEΦ20、Φ25	20102110
	GB5783-M8×55	BOLT (S+LIFTING HOOK)	1	DIAMETER AXLEΦ20	20102111
	5/16-24×38	BOLT (Q ENGINE)	1	DIAMETER AXLEΦ19.05	20109036
	5/16-24×45	BOLT (Q ENGINE+LIFTING HOOK)	1	DIAMETER AXLEΦ19.05	20109032
	7/16-20×25	BOLT (Q ENGINE)	1	DIAMETER AXLEΦ25.4	20109030
58	Φ8×Φ30×3	LARGE WASHER	1	DIAMETER AXLEΦ19.05、Φ20	20504011
	Φ8×Φ40×3	LARGE WASHER	1	DIAMETER AXLEΦ25、Φ25.4	20519009
59	MT36-02-00-07G	PIPE FOR CLUTCH (S ENGINE)	1	DIAMETER AXLEΦ20	41004010
	MT36-02-00-07Y	PIPE FOR CLUTCH (Q ENGINE)	1	DIAMETER AXLEΦ19.05	41004012
	MT36-02-00-07C.GZ	LONG PIPE FOR CLUTCH (S+LIFTING HOOK)	1	DIAMETER AXLEΦ20	40504193
	MT36-02-00-07C.YZ	LONG PIPE FOR CLUTCH (Q+LIFTING HOOK)	1	DIAMETER AXLEΦ19.05	40504191
	MT42.46-02-00-07G	PIPE FOR CLUTCH (S ENGINE)	1	DIAMETER AXLEΦ25	40705038
60	AX26	BELT	1	DIAMETER AXLEΦ19.05、Φ20	21201108
	AX28	BELT	1	DIAMETER AXLEΦ25、Φ25.4	21201109
61	MT36-02-00-00G	CLUTH ASSY. (S ENGINE)	1	DIAMETER AXLEΦ20	54601002
	MT36-02-00-00Y	CLUTCH ASSY. (Q ENGINE)	1	DIAMETER AXLEΦ19.05	54601105
	MT42.46-02-00-00G	CLUTCH ASSY. (S ENGINE)	1	DIAMETER AXLEΦ25	54601103
	MT42.46-02-00-00Y	CLUTCH ASSY. (Q ENGINE)	1	DIAMETER AXLEΦ25.4	54601104
62	MT36-06-00-04G	CLUTCH ADJUSTING SLEEVE (MT36 S ENGINE)	1	DIAMETER AXLEΦ20	40504134
	MT36-06-00-04Y	CLUTCH ADJUSTING SLEEVE (MT36 Q ENGINE)	1	DIAMETER AXLEΦ19.05	40504160
	MT36-06-00-04C.GZ	LONG ADJUSTING SLEEVE OF CLUTCH (MT36 S ENGINE)	1	DIAMETER AXLEΦ20	40504192
	MT36-06-00-04C.YZ	LONG ADJUSTING SLEEVE OF CLUTCH (MT36 Q ENGINE)	1	DIAMETER AXLEΦ19.05	40504190
	MT42.46-06-00-04G	CLUTCH ADJUSTING SLEEVE (MT42.46 S ENGINE)	1	DIAMETER AXLEΦ25	40504136
63	MT36-11-01-01	VIBRATION DAMPER	4		41201126
64	MT36-06-00-02	MOUNTING PLATE, BELT GUARD (MT36)	1	DIAMETER AXLEΦ19.05、Φ20	40206102
	MT42.46-06-00-02G	MOUNTING PLATE, BELT GUARD (MT42.46)	1		40204089
	MT42.46-06-00-G270F	MOUNTING PLATE, BELT GUARD (MT42.46)	1	G270F	40204077
65	GB70.3-M8×20	INNER HEXAGON COUNTERSUNK SCREW BLACK	2	DIAMETER AXLEΦ25	20308111
	5/16-24*1"	U. S. INNER HEXAGON COUNTERSUNK SCREW	2	DIAMETER AXLEΦ25.4	99901044
66	MT36-B-DG	LIFTING HOOK (MT36)	1		54601098
	MT42.46-DG	LIFTING HOOK (MT42.46)	1		54601095
67	GX160H1-SX	HONDA	1	DIAMETER AXLEΦ20	41401013
	GX160UT2-SX4	HONDA	1		41401001
	EX17	ROBIN	1		41401024
	EY20	ROBIN	1		41401029
	GX200U-SM14	HONDA	1		41401012

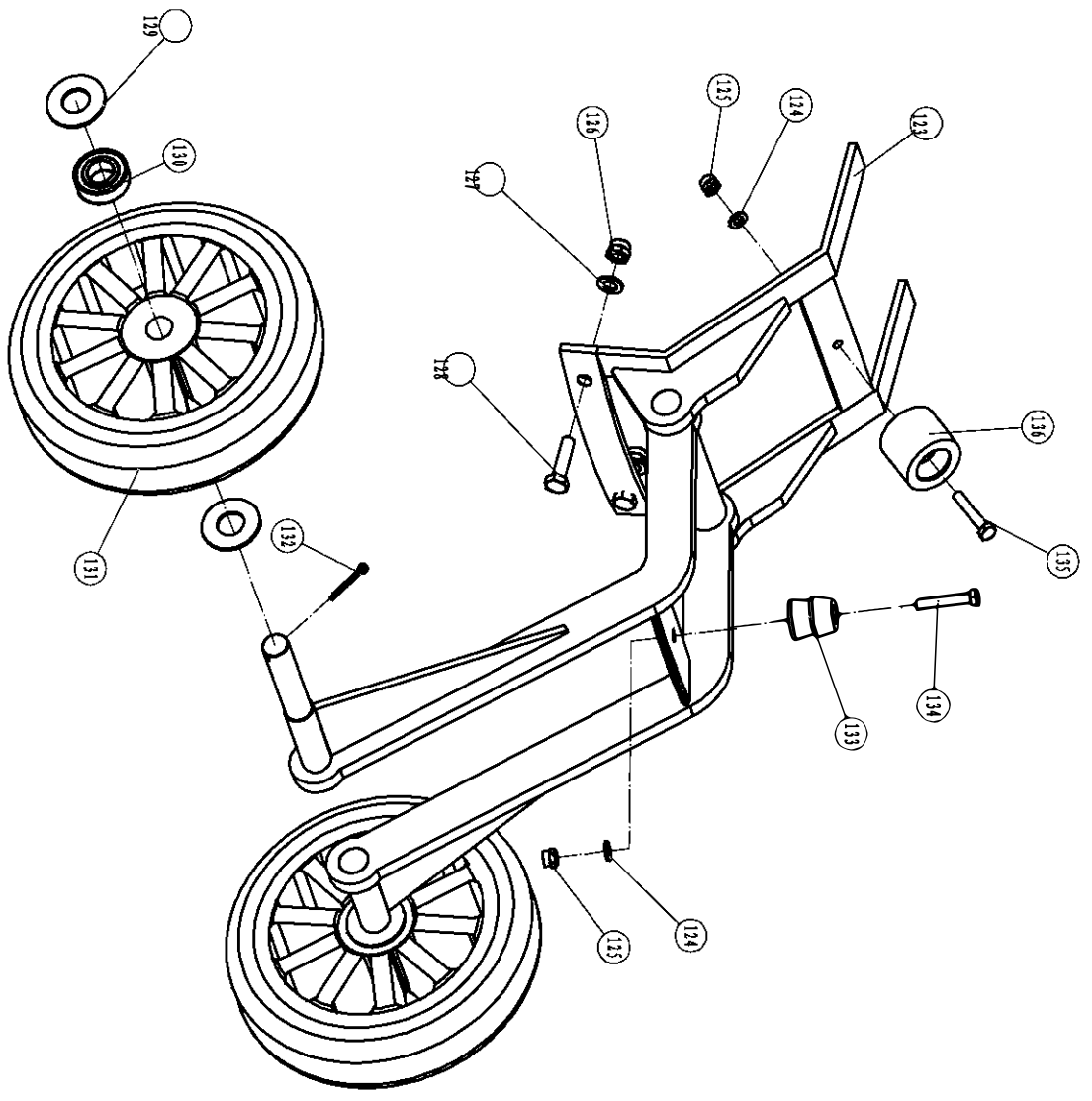
**PARTS LIST 3**  
**PMT36/MT42/MT46**

PMT36、42、46-BOM03-A						
ITEM NO.	PART NO.	DESCRIPTION	QTY	REMARK	ERP No.	
67	GX160H1-QX	HONDA	1	DIAMETER AXLEΦ19.05	41401014	
	GX160UT2-QX4	HONDA	1		41401002	
	G200F	LONCIN	1		41401042	
	GX270H-SH	HONDA	1	DIAMETER AXLEΦ25	41401016	
	EX27	ROBIN	1		41401025	
	GX270U-QA2	HONDA	1	DIAMETER AXLEΦ25.4	41401003	
	GX270H QXHQ	HONDA	1		41401072	
	270F	LONCIN	1		41401095	
68	GB818-M3×8	CROSS RECESS HEAD SCREW (STAINLESS STEEL)	1	NOT FOR ROBIN AND LOCIN ENGINE	20301010	
69	MT36-05-07-02	BOLT	1		40203310	
70	GB97.1-5	WASHER 5 (STEEL)	1		20501021	
71	GB889.1-M5	LOCK SCREW M5 (STEEL)	1		20405021	
72	MT36-11-04-01	GUIDE COVER (MT36)	1		40204074	
	MT42.46-11-04-01	GUIDE COVER (MT42.46)	1		40204076	
73	GB93-4	SPRING WASHER 4 (MT36)	2		20509001	
74	GB818-M4×8	CROSS RECESS HEAD SCREW (MT36)	2		20301001	
	GB12618-3.2×7	RIVET (MT42.46)	3		20705003	
75	GB889.1-M8	FLAT WASHER	4		20405004	
76	GB97.1-8	FLAT WASHER	4		DIAMETER AXLEΦ19.5、Φ20	20501007
	GB96.1-8	BIG WASHER	4		DIAMETER AXLEΦ25、Φ25.4	20504003
77	GB1096-5×5×33	KEY	1		DIAMETER AXLEΦ20	20901062
	4.78×4.78×38	KEY	1	DIAMETER AXLEΦ19.05	20901257	
	7×7×33	KEY	1	DIAMETER AXLEΦ25	20901258	
	6.3×6.3×43	KEY	1	DIAMETER AXLEΦ25.4	20901259	
78	GB5783-M8×20	HEXAGONAL BOLT	4	FOR S ENGINE AND LOCIN ENGINE	20102101	
	GB5783-M8×25	HEXAGONAL BOLT (SUITABLE FOR LIFTING HOOK)	4	FOR S ENGINE AND LOCIN ENGINE	20102102	
	5/16-24x20	HEX BOLT (Q ENGINE)	4	FOR Q ENGINE NOT INCLUDING LOCIN ENGINE	20109033	
	5/16-24x25	HEX BOLT (Q ENGINE) (SUITABLE FOR LIFTING HOOK)	4	FOR Q ENGINE NOT INCLUDING LOCIN ENGINE	20109031	
79	GB5783-M8×16	HEX HEAD SCREW	1		20102116	
	GB5783-M8×20	HEX HEAD SCREW (SUITABLE FOR LIFTING HOOK)	1		20102101	
80	MT36-06-01-02-BJ	RIGHT PLATE ASSEMBLY (MT36)	1	DIAMETER AXLEΦ19.05、Φ20	54601131	
	MT42.46-06-01-02-BJ	RIGHT PLATE ASSEMBLY (MT42,MT46)	1	DIAMETER AXLEΦ25、Φ25.4	54601134	
81	GB96.1-10	BIG WASHER	6		20504005	
82	GB5783-M10×35	HEX HEAD SCREW	4		20102155	
83	GB70.3-M10×20	SUNK SCREW	4	DIAMETER AXLEΦ19.05、Φ20	20308147	
	GB70.3-M10×20	SUN SCREW	8	DIAMETER AXLEΦ25、Φ25.4	20308147	
84	MT36-06-01-01-BJ	LEFT PLATE ASSEMBLY	1	DIAMETER AXLEΦ19.05、Φ20	54601130	
	MT42.46-06-01-01-BJ	LEFT PLATE ASSEMBLY	1	DIAMETER AXLEΦ25、Φ25.4	54601133	
85	MT36-06-00-01	PULLEY	1		40607048	
86	GB78-M8×16	HEX HEAD SCREW M8	1		20312009	
87	GB91-2.5×16	PIN	2		20805005	
88	PMT36-05-05-02	PIN FOR FORK	1		40102022	
89	MT36-05-05-01	FORK	1		40101059	
90	MT36-04-00-01	BEARING PLATEN	1		40503033	
91	MT36-04-00-02 (51209)	BEARING 51209	1		21012012	
92	MT36.42.46-04-00-05	BLADE PLATEN	1		40503032	
93	MT36-04-00-05	CROSS WASHER	1		41201125	
94	GB70.1-M12×30 12.9	SOCKET CAP SCREW	1		20306014	



**PARTS LIST 4**  
**PMT36/MT42/MT46**

PMT36、42、46-BOM04-A					
ITEM NO.	PART NO.	DESCRIPTION	QTY	REMARK	ERP No.
95	GB13871-TC20×32×7	SEAL	1		21106038
96	GB70. 1-M6×20	SOCKET CAP SCREW	8		20306048
97	MT36-03-00-05	FLANGE, INPUT SHAFT	1		40503034
98	GB3452. 1-55×3	O-RING	2		21101021
99	MT36-03-00-06	PLATE, SEAL	2		40504141
100	GB297-32204	BEARING	2		21001084
101	GB1096-5×30	KEY	1		20901055
102	MT36-03-00-07	GEAR, WORM & SHAFT ASSY.	1		40405009
103	MT36. 42. 46-03-00-01	CASE, GEAR	1		40901047
104	GB1096-8×30	KEY A	2		20901163
105	MT36-03-00-09	TURBOSHAFT	1		40403016
106	GB276-6207-2RS	BEARING 6207	1		21001048
107	PMT36-03-00-08	COPPER WORM GEAR	1		40605002
108	GB297-30207	BEARING 30207	1		21001049
109	MT36-03-00-10	WAHSER	1		40504139
110	MT36-03-00-03	WASHER (BIG)	1		40504140
111	MT36-03-00-02	TOP COVER	1		40201082
112	MT36-03-00-11	VENT VALVE	1		40402068
113	GB70. 3-M8×16	SOCKET CAP SCREW	8		20308110
114	GB3452. 1-130×3	O-RING	1		21101019
115	GB70. 3-M8×20	SOCKET CAP SCREW	1		20308111
116	MT36-03-00-04	COVER	1		41201128
117	ZG1/2	HEXAGONAL HEAD PLUG	1		21102004
118	GB1160. 2-M27×1. 5	OIL GAUGE	1		21110007
119	GB901-M10×40	DOWEL SCREW	4		20110019
120	GB13871-TC35×54×8	O-RING	1		21106040
121	JB1000-M12×1. 25	OUTER HEXAGONAL PLUG	1		21103006
122	JB1002-12	COPPER PAD	1		21105007



B

A

**PARTS LIST 5**  
**PMT36/MT42/MT46**

PMT36-BOM05-A

ITEM NO.	PART NO.	DESCRIPTION	QTY	REMARK	ERP No.
123	MT36.BY.01	WHEEL STAND	1	FOR PMT36	40101088
124	GB97.1-6	FLAT WASHER	2		20501005
125	GB889.1-M6	LOCK NUT M6	2		20405002
126	GB889.1-M8	LOCK NUT M8	2		20405004
127	GB97.1-8	FLAT WASHER	2		20501007
128	GB5783-M8×25	HEXAGONAL HEAD BOLT	2		20102102
129	φ 35 × φ 18 × 3	FLAT WASHER	4		20519010
130	GB276-6003-2RS	BEARING	4		21001085
131	φ 200 × φ 15 × 56	WHEEL	2		41405026
132	GB91-3.2×36	PIN	2		20805050
133	MT36.BY-01	RUBBER LOCATING BLOCK	1		41105018
134	GB70.1-M6×30	SOCKET HEAD SCREW	1		20306058
135	GB5783-M6×20	HEXAGONAL HEAD BOLT	1		20102054
136	MT36.BY-02	RUBBER LOCATING BLOCK	1		41105019



**MASTERPAC USA**

1260 Old Franklin Turnpike  
Suite B, Rocky Mount, Virginia 24151, USA  
Tel: +1-540-483-2606  
E-mail: [usa@masterpac.eu](mailto:usa@masterpac.eu)

**MASTERPAC ASIA:**

Add. Weisi Road, Baohe Industrial Estate, P.R.C.  
Tel. 86-551-64846601, 64846580  
Fax. 86-551-64846616, 64846626  
E-mail. [sales@masterpac.eu](mailto:sales@masterpac.eu)  
**[www.masterpac.eu](http://www.masterpac.eu)**