

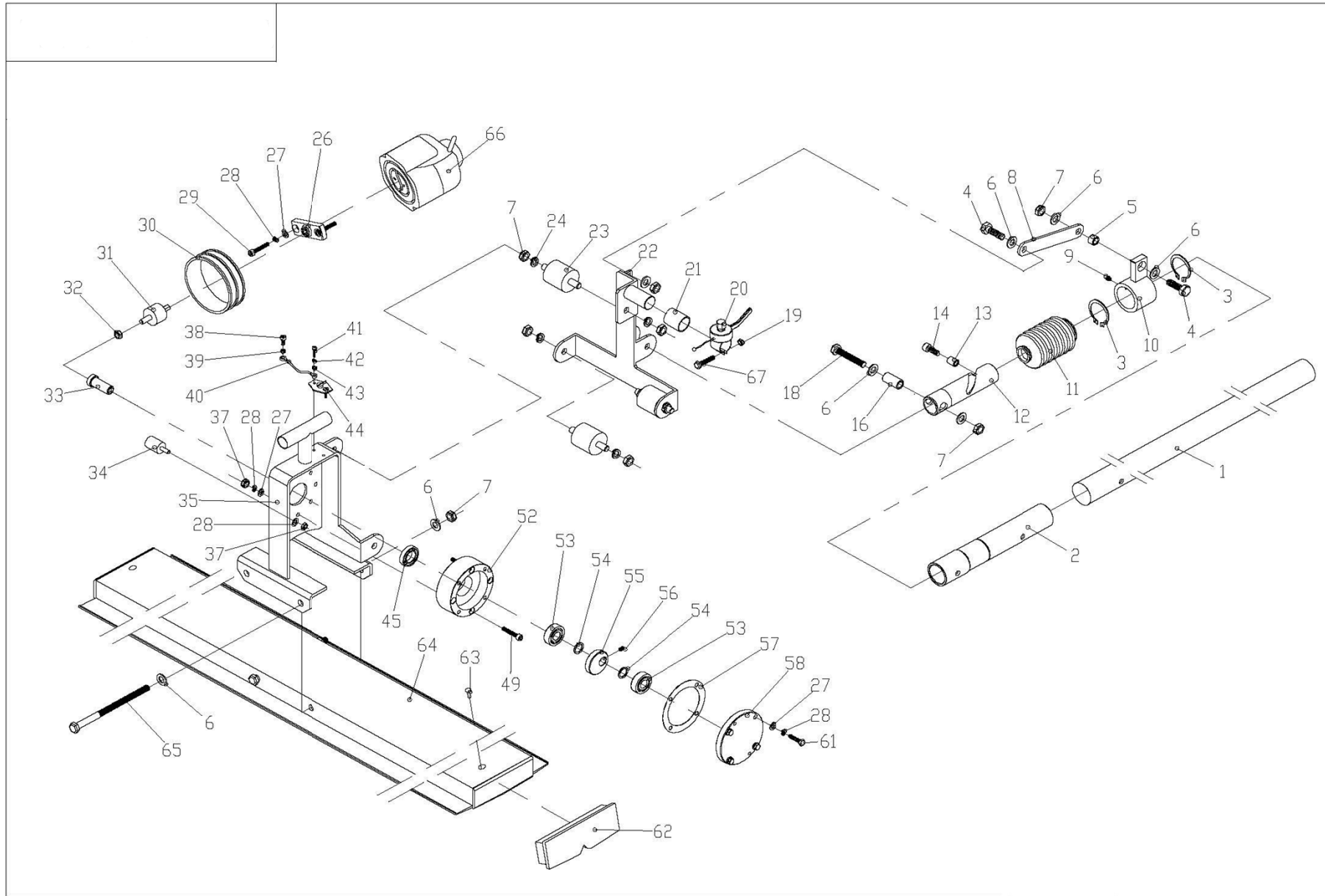


# PARTS MANUAL

## VIBRATING SCREED



# ESPLOSO PIÙ ELENCO RICAMBI VIBROFINITRICE PMDH



ITEM NO.	PART NO.	DESCRIPTION	ERP NO.	QTY	REMARK
1	MM25.04.00	HANDLE PIPE	41003074	1	
2	MM25.03.01A	HANDLE JOINT	40505017	1	
3	GB894.1-38	CIRCLIP FOR SHAFT 38	20601015	2	
4	GB5783-M10X35	HEXAGON BOLT M10x35	20102155	2	
5	MM25.03.08A	SUPPORT SET OF BUSHING	40504068	1	
6	GB97.1-10	FLAT WASHER 10	20501009	10	
7	GB889.1-M10	LOCKNUT M10	20405006	9	
8	MM25.03.02A	HANDLE PULLING PLATE	40208042	1	
9	GB11152-M6	GREASE FITTING M6	21110001	1	
10	MM25.03.03A	JOINT SLEEVE	40305024	1	
11	MM25.03.04	RUBBER PROTECTOR	41204007	1	
12	MM25.03.06A	HELICAL CASING	40505018	1	
13	MM25.03.05	SPIRAL COLUMN	40707010	1	
14	MM25.03.09	SOCKET HEAD SCREW	40401021	1	
16	MM25.03.07A	HELICAL CASING BUSHING	40504069	1	
18	GB5783-M10X60	HEXAGON BOLT M10x60	20102160	1	
19	MM25.06.00	THROTTLE CABLE ASSY	41403020	1	
20	MM25.09.00	THROTTLE CONTROL	41403021	1	
21	MM25.06.01	NYLON SLEEVE	41201056	1	
22	MM25.02.02	SIDE BRACKET	40303036	1	
23	MM25.02.03	SHOCK ABSORBER	41201009	3	
24	GB93-10	SPRING WASHER 10	20509008	6	
26	MM25.01.08A	COUPLING BAND	40508007	1	
27	GB97.1-6	FLAT WASHER 6	20501005	10	
28	GB93-6	SPRING WASHER 6	20509004	14	
29	GB5783-M6X20	HEXAGON BOLT M6x20	20102054	2	
30	MM25.01.09	PROTECTIVE COVER	41201029	1	
31	MM25.01.01A	FLEXIBLE JOINT	41201030	1	
32	GB6174-M8	HEXAGON THIN NUT M8	20408001	1	
33	MM25.01.04A	SHAFT	40406038	1	
34	MM25.01.10	ENGINE SHOCK ABSORBER	41201010	4	
35	MM25.02.01	BRACKET	40802017	1	

TO BE CONTINUED

ITEM NO.	PART NO.	DESCRIPTION	ERP NO.	QTY	REMARK
37	GB889.1-M6	LOCKNUT M6	20405002	9	
38	GB70.1-M5X12	HEXAGON SOCKET CAP SCREW M5x12	20306003	4	
39	GB93-5	SPRING WASHER 5	20509002	1	
40	MM25.07.00	GROUND CABLE	41408007	1	
41	GB818-M4X16	CROSS RECESS PAN HEAD SCREW M4x16	20301003	2	
42	GB93-4	SPRING WASHER 4	20509001	2	
43	GB97.1-4	FLAT WASHER 4	20501001	2	
44	MM25.10.00	STOP SWITCH	41403022	1	
45	GB13871-FB15x30x7	LIP-TYPE SEAL RING 15x30x7	21106001	1	
49	GB5783-M6X60	HEXAGON BOLT M6x60	20102061	4	
52	MM25.01.02A	BEARING HOUSING	40801003	1	
53	6202ZZC3 NSK	BEARING 6202-2Z-3C	21001003	2	
54	MM25.01.07A	BEARING WASHER	40504067	2	
55	MM25.01.03A	ECCENTRIC BLOCK	40705014	1	
56	GB78-M6X10	SIX PYRAMID END SCREW SET M6x10	20312003	1	
57	MM25.01.06A	SEAL WASHER	41302002	1	
58	MM25.01.05A	BEARING COVER	40502006	1	
61	GB5783-M6X30	HEXAGON BOLT M6x30	20102056	4	
62	MM25.05.02	END PLUG	41205019	2	
63	GB12618-3.2x10	OPEN MOUTH OVAL HEAD CORE PULLING RIVET 3.2x10	20705004	2	
64	PMDB-1(1.5M)	SCREED BLADE	60702026	1	
	PMDB-2(2M)	SCREED BLADE	60702027	1	
	PMDB-3(2.5M)	SCREED BLADE	60702028	1	
	PMDB-4(3M)	SCREED BLADE	60702029	1	
65	GB5782-M10X160	HEXAGON BOLT M10x160	20101055	2	
66	GX25 S3	ENGINE	41401050	1	
	EH025	ENGINE	41401027	1	
67	GB70.1-M6X30	HEXAGON SOCKET CAP SCREW M6x30	20306058	1	



**MASTERPAC INTERNATIONAL:**

Add. Z.A.C du trou grillon

P.O Box 38. 91280 St PIERRE DU PERRY. FRANCE

Tel. +33-6-12-70-02-63

E-mail. [intlsales@masterpac.eu](mailto:intlsales@masterpac.eu)

**MASTERPAC ASIA:**

Add. Weisi Road, Baohe Industrial Estate, P.R.C.

Tel. 86-551-64846601, 64846580

Fax. 86-551-64846616, 64846626

E-mail. [sales@masterpac.eu](mailto:sales@masterpac.eu)

[www.masterpac.eu](http://www.masterpac.eu)